

Premium BF-Series Power vented



an experienced leader in the gas fireplace industry



fire feature

The Art Of Fire Places

power vented Premium BF-Series

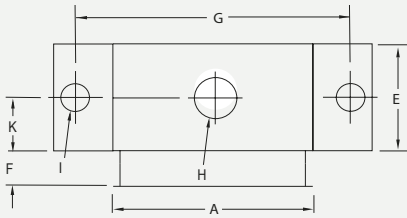
Single-Sided BF-PV Series



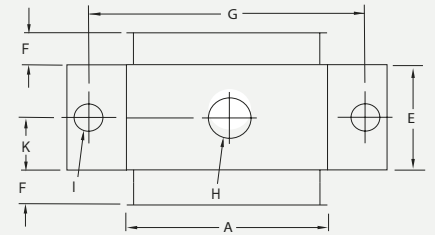
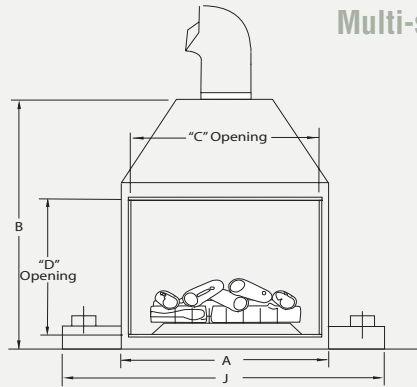
Multi-Sided BF-ST Series



Single-sided fireplace dimensions



Multi-sided fireplace dimensions



BF52

- 150,000 BTU/H on Natural Gas & Propane

BF60

- 200,000 BTU/H on Natural Gas & Propane

BF-Series: Fireplace Dimensions

	A	B	C	D	E	F	G	H	I	J	K
BF52	60	64	52	30	24	12	79	12	8	90	12
BF60	68	82	60	48	24	12	81	12	8	91	12

Fireplace Features

- Fireplace must be installed with Power Vent, consultation with the factory is required.
- Large realistic logset for your viewing pleasure.
- Enormous viewing area for a feature view of the flame.
- Electronic ignition
- 100% fail-safe shut-off valve

Consult the owner's manual for complete installation instructions and proper clearances to combustible surfaces prior to stalling fireplace.

Warranty: The manufacturer warrants this fireplace to be free from defects in materials and workmanship at the time of manufacture. There is a limited 10 year warranty on the firebox; 5 year limited warranty on the burner and 1 year limited warranty on the pilot burner assembly and fan motors (if included). The valve carries a limited 1 year warranty unless otherwise specified in the installation manual. Glass, plated/painted finishes and refractory lining are exempt.

All specifications, framing dimensions, product designs, materials and colors are subject to change without notice. The actual flame pattern and color may vary slightly from the illustrations. Diagrams and illustrations are not to scale.



MONTIGO DELRAY CORP.

Part# XB1028 - 051407 • Printed in Canada

Langley, BC • Ferndale, WA

Phone : (800) 378-3115 Fax: (866) 300-0927

Email: fireplaces@montigo.com • Website: www.montigo.com